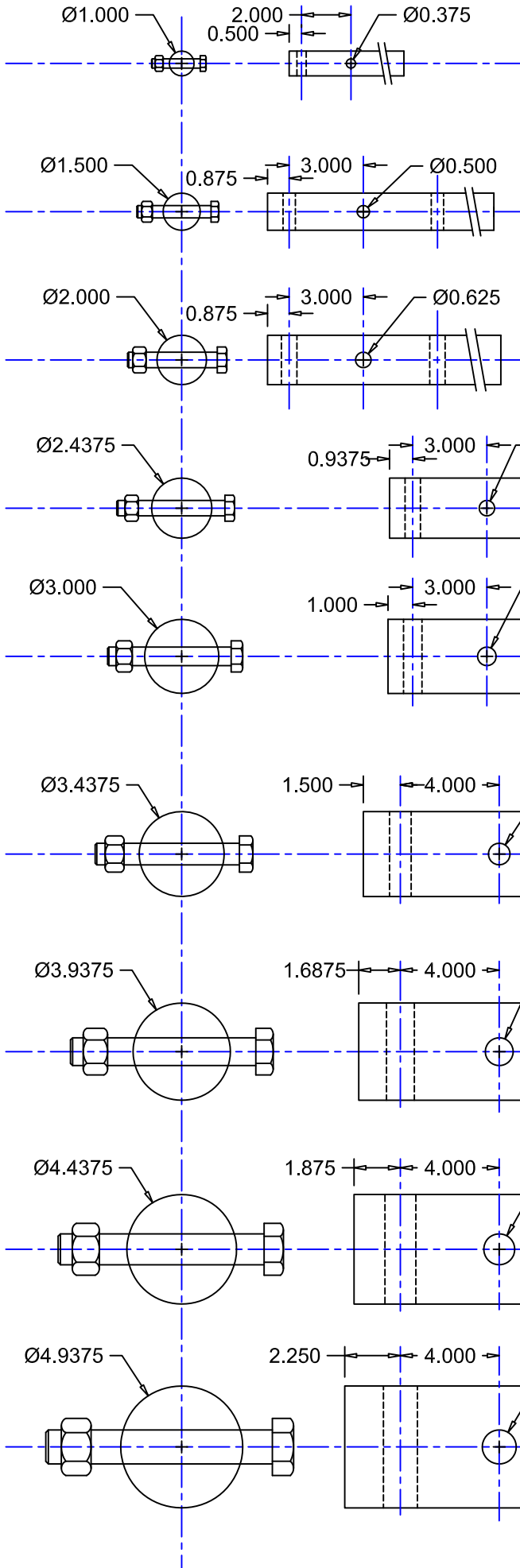


Screw Conveyor Coupling Bolt Strength and Configuration



| Shaft Dia. | Bolt Dia. | Bolt Area | Torque Transmitted by 50,000 PSI Strength BOLTS through a: | | | |
|------------|--------------|-----------|--|--------------------|--------------------------------|---------------------------|
| | | | Pounds per Bolt | Per Bolt in Ft-Lbs | Std. 2 Bolt Coupling in Ft-Lbs | 3 Bolt Coupling in Ft-Lbs |
| 1 | 0.375 | 0.110 | 5,522 | 173 | 345 | 518 |
| 1.5 | 0.500 | 0.196 | 9,817 | 409 | 818 | 1,227 |
| 2 | 0.625 | 0.307 | 15,340 | 799 | 1,598 | 2,397 |
| 2.4375 | 0.750 | 0.442 | 22,089 | 1,381 | 2,761 | 4,142 |
| 3 | 0.875 | 0.601 | 30,066 | 2,192 | 4,385 | 6,577 |
| 3.4375 | 1.125 | 0.994 | 49,701 | 4,659 | 9,319 | 13,978 |
| 4.4375 | 1.250 | 1.227 | 61,359 | 6,392 | 12,783 | 19,175 |
| 4.9375 | 1.375 | 1.485 | 74,245 | 8,507 | 17,014 | 25,522 |